

MONTHLY MEMBERSHIP PROGRESS REPORT

District 33 N

Results as of: 5/31/2024

GMT:

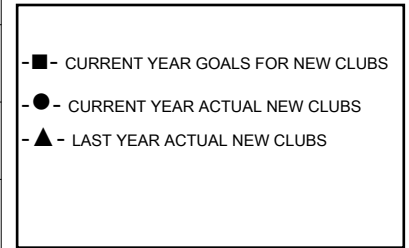
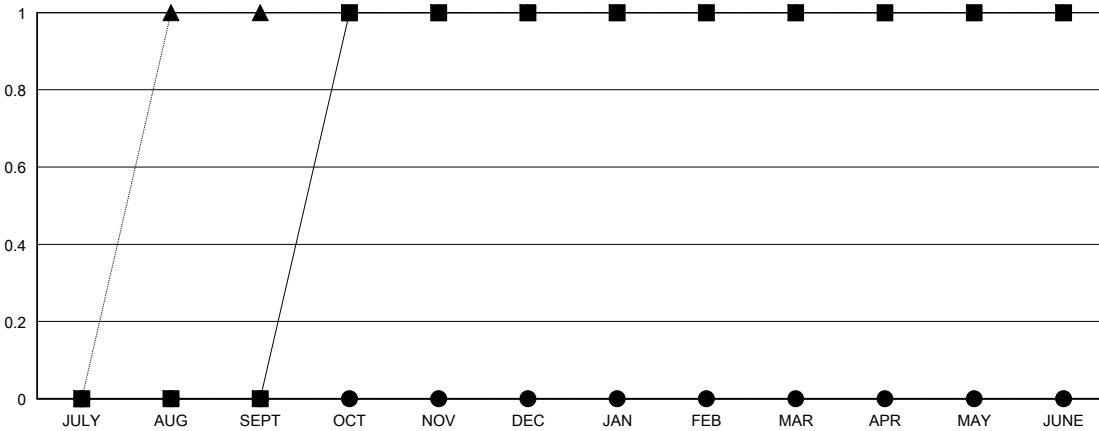
LOCATION MASSACHUSETTS

GMT CA

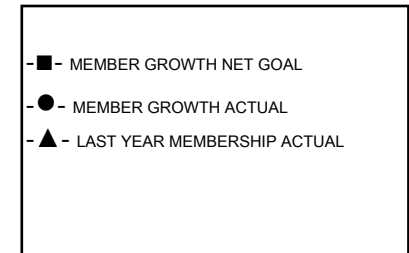
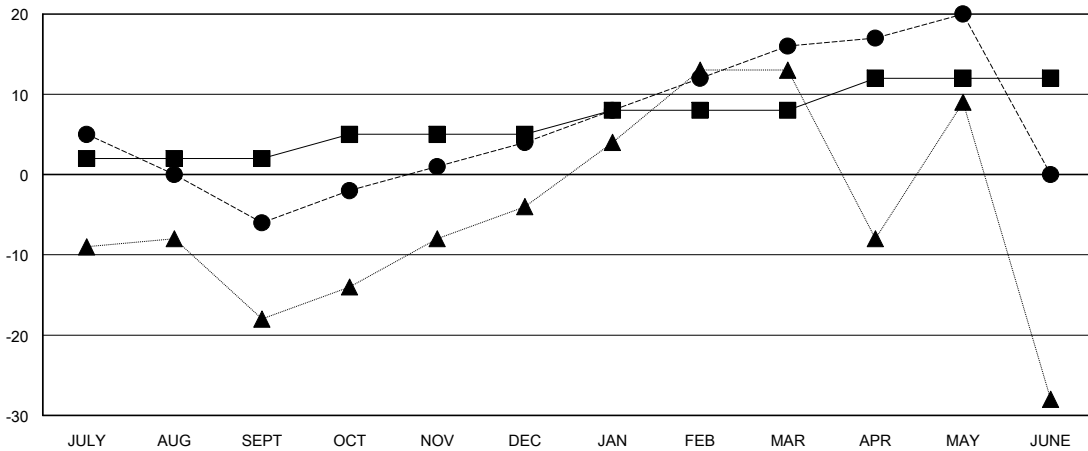
Clubs			
RESULTS FOR 2023-2024			
QUARTER	NEW CLUB GOAL	NEW CLUBS	DROPPED CLUBS
JULY/AUG/SEPT	0	0	0
OCT/NOV/DEC	1	0	1
JAN/FEB/MAR	0	0	0
APR/MAY/JUNE	0	0	0

Members			
RESULTS FOR 2023-2024			
QUARTER	MEMBER GROWTH NET GOAL	MEMBER GROWTH ACTUAL	DROPPED MEMBERS ACTUAL (including transfers)
JULY/AUG/SEPT	2	12	17
OCT/NOV/DEC	3	27	16
JAN/FEB/MAR	3	22	8
APR/MAY/JUNE	4	24	19

GOALS AND ACTUAL NEW CLUBS CUMULATIVE



GOALS AND ACTUAL MEMBERS CUMULATIVE



DROPPED CLUBS: 1	23 CLUBS OF 40 ADDED 1 OR MORE NEW MEMBERS	<u>GENDER DISTRIBUTION</u>	
		MALE	647 (58.71%)
		FEMALE	455 (41.29%)
<u>DROPPED MEMBERS</u>		TOTAL FAMILY UNIT MEMBERS 145	
DECEASED	16	FAMILY MEMBERS PAYING HALF DUES 75	
CLUB CANCELLED	0		
OTHER	43		
TOTAL	59		

[CLICK HERE FOR CUMULATIVE MEMBERSHIP DATA](#)